



◀ **CAMBRIDGE SCHOOL OF ART**
Bogdan Burciu's aptitude for CAD stood out at this year's New Designers exhibition. For his final project, Burciu designed a three-storey residence for an elderly couple, one of whom is a wheelchair user. With his attention to detail and intelligent use of space, Burciu creates a functional yet contemporary home using a combination of rustic and modern elements. The open-plan design is flooded with natural light, complemented by neutral colours and natural aesthetics. In the kitchen, splashes of industrial metallic texture set off the muted tones of the sleek surfaces. There is full wheelchair accessibility throughout the home, which also features a gym, spa and pool.
www.twobdesign.co.uk

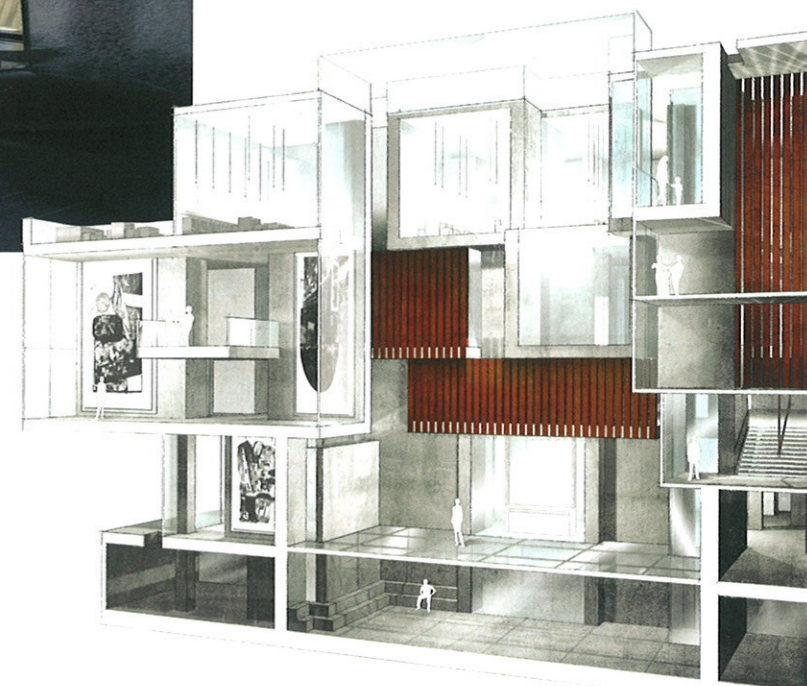


▶ **KLC SCHOOL OF DESIGN**
Marit Hanley designed this glamorous Surrey residence for an art director in the film industry. Her astutely thorough analysis of the client has resulted in an aptly dramatic and masculine scheme, using angular forms and a dark colour palette of grey, black and deep purple. The use of stone, wood, steel and feature lighting creates a strongly industrial feel throughout, with contrasting softer textures such as wool and leather adding comfort. On graduation, Hanley received a CAD award from Computers Unlimited on behalf of Nemteschek NA and was named the Blended Learning Diploma Student of the Year.
marit@orion-designs.co.uk

▶ **THE INTERIOR DESIGN SCHOOL**
Liz Wilson named her boutique hotel concept Archway after its intended location just beyond the grade-II-listed arch at Shafto Mews in Knightsbridge. Aiming to combine luxury with sustainability, the project combines antiques and reclaimed furniture restored by local artisans with environmentally friendly fabrics in each of the 20 unique bedrooms. A feeling of intimacy and serenity is reinforced throughout the hotel; technology is hidden discreetly and the scheme is intimate, timeless and romantic. After 20 years in the media and finance industries, Wilson now hopes to move into a more creative career and to continue designing 'practical spaces for a 21st-century lifestyle'.
liz_wilson@yahoo.com



▼ **NOTTINGHAM TRENT UNIVERSITY**
Laura Graham's work exemplifies the superlative standard of visual presentation and drawing ability among Nottingham Trent University graduates. Shown here is Graham's concept for a Newcastle Gallery for Contemporary Art in a former Bank of England site overlooking the River Tyne. Drawing inspiration from the existing building's concrete framework, she uses the protruding structures to connect rooms visually, allowing visitors to see into neighbouring spaces. The varying scale and structural elements create different light intensities throughout the gallery. Graham says she used 'a simple, yet rich palette of materials' to reference the site's past and present uses.
laura_graham@hotmail.com • www.sixtysixofus.com



▶ **AMERICAN INTERCONTINENTAL UNIVERSITY LONDON**
Oksana Akishyna designed this luxurious and tranquil bathroom for a cantilevered house, intended for a riverside location in Ukraine's Carpathian Mountains. With enormous windows, exposed structural elements and portions of semi-transparent floor, the design maximises the view outside and creates a feeling of unlimited space. Akishyna stayed true to her main theme of feeling at one with nature by incorporating eco-friendly features such as rainwater collection, locally sourced materials, water-efficient equipment and minimal artificial lighting. Akishyna was presented with the Interior Design Association award for spatial design at New Designers 2011.
akishyna22@gmail.com

First Class

This year's interior design graduates combine talent, originality and flair, as our special selection of standout work clearly shows *Words BRIANA GUST and JENNY BREWER*



◀ **INCHBALD SCHOOL OF DESIGN**
Landis Bagnall designed this luxury Holland Park residence for a celebrity family continuously in the limelight. Applying his concept of 'connective chic', Bagnall subtly linked different areas of the house through a repetition of architectural features and materials. The large master suite is completely open plan except for one cantilevered wall, creating a flow between the sleeping area, bathroom, dressing area and stairs. The spiral staircase in the double-height space connects the two floors and further opens the room to natural light. Bagnall was awarded a prize at graduation by interior designer Annie Stevens for what she described as 'a sophisticated design that screams "employ me!"'.
landisbagnall@gmail.com