

# eclectic WARRIOR

Bright colours, glamorous textiles, innovative lighting and classic design pieces – they all make Holly's period property sparkle with a very 21st-century vibe

Words – Luke Tebbutt  
Photography – Lisa Cohen  
Styling – Mary Weaver



## Home profile

**THE OWNER** Holly Wick, an interior designer and owner of the shop Holly's House. She shares her home with her boyfriend Will Vaughan, who works in property development, and Didier the cat.  
**THE PROPERTY** A three-storey Victorian terrace in west London with a living room, kitchen-diner and WC on the ground floor, two bedrooms and bathrooms on the first floor and a third bedroom and bathroom on the second floor.



## ← FIREPLACE

Holly has left some bricks exposed, such as in the living room's second fireplace, as a reminder of the building's past. The bicycle is useful for trips around the corner. 'London streets are a bit scary, so it's more a decorative item at the moment!' says Holly.

**GET THE LOOK** The chevron rug is by Jonathan Adler. The Max Wiedemann painting is available from Wanted Gallery in London. The walls are painted in Farrow & Ball's Manor House Gray estate emulsion. Holly sourced her bike on eBay. For a similar vintage bike, try The Old Bicycle Showroom. The flooring is white oiled larch from Element 7. The shelving is from The Conran Shop.

## LIVING ROOM

By opening up the front rooms and hall, Holly has given her home's Victorian details more presence and room to breathe. The understated grey backdrop is enlivened with lush textures and warmer colours.

**GET THE LOOK** The Content by Conran sofa is covered in a Designers Guild velvet. The Eames rocking chair was bought at a market. To buy a new Eames RAR rocking chair, go to Vitra. The chandelier and coffee table are from thefrenchhouse.co.uk. The table light in the corner was found at a car boot sale. For similar, try Mid Century Modern. The pineapple on the mantelpiece came from Ardingly Antiques & Collectors Fair. For similar, try Caravan.

# holly

Wick loves jewellery. From the jumbled pots on her antique dressing table, which overflow with shiny pieces, to her kitchen, where two giant pendant lights hang like oversized earrings above her dining table, it's all about accessorising.

'They're actually old chicken-house heaters that I had rewired,' she says nonchalantly of the lights. 'People are like, "Aren't they too big?" And they probably are, but I just love industrial things.'

It sums up the interior designer's quirky approach, which is to find things she loves and make everything else work around them. Like a bird picking twigs to make a nest, she has assembled a magpie mix of disparate strands to create her home – a Victorian-style bath here, a Parker Knoll sofa and chevron rug there – all intertwined effortlessly.

'I have an eclectic style,' she says. 'I like combining different influences, but I didn't want to take away from the building's Victorian character either.' Luckily for Holly, who shares the house with her boyfriend Will and cat Didier ('as in Drogba'), it was already in a sorry state when she bought it two years ago, so anything would have been an improvement. 'It had been rented out for years and was pretty unloved, so for the first six months, the house was a building site,' she says.

Working with architect John Kirk Wilson, she knocked through the front reception rooms and hall to create something rare: a Victorian home that's open and spacious as soon as you walk in. They also doubled the size of her kitchen at the back by extending into the garden's side return and changed the layout upstairs from four bedrooms and two bathrooms to three bedrooms and three bathrooms.

She then spent a year and a half fine-tuning the interiors, with regular swoops to antiques markets and a canny selection of contemporary designs. In Holly's house, pieces by Lee Broom, Moooi and Jonathan Adler live happily alongside vintage furniture, just as they do in her shop and interior design business, also called Holly's House.

'The two influence each other,' she says. 'Thankfully, I work with a friend who keeps me in check so half the shop doesn't escape to my living room.'

So what's her secret to making this offbeat style feel effortless and coherent? 'You've got to be brave and choose what you love,' she says. 'But you also have to be practical. I find that sketching a space helps me visualise what it needs and I always ask myself if I will use something before I buy it. And then you come across those must-have things that you just have to make work.'

Themes help tie things together. Holly has gone for a rustic country-in-the-city riff, with exposed brick, a big-as-she-could-fit kitchen table and, yes, those chicken-house heaters.

'I'm a country girl at heart, so when I come home, I don't like to feel as if I'm in the city,' she says. 'That's why a big kitchen table was important to me, rather than an island in the middle. When friends and family visit, that's the hub.'

And for quieter nights, Holly and Will have the front room,



*'When I see something I love, I'll try to make everything else work around it'*

with its darker colours and working fireplace. What better spot for a glass of Shiraz? 'That's the room that makes me happiest when I get inside,' says Holly. 'The grey walls and warm colours make it cosy. It's just home to me.'

And it feels like home to us too, with its plush velvet sofa, comfy cushions, snug Eames rocker and sheepskin rug. Holly's next project is to redo the spare room on the top floor. When she's finished, we'll be waiting with our belongings packed. See more of Holly's work at [hollys-house.com](http://hollys-house.com). See architect John Kirk Wilson's portfolio at [johnkirkwilson.com](http://johnkirkwilson.com)



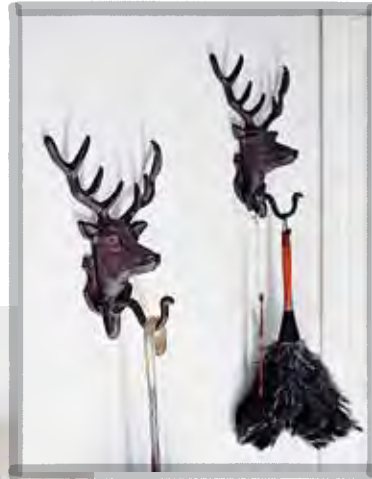
## LIVING ROOM

'I kept the original staircase, but gave it a touch-up by painting the banister black,' says Holly. 'I thought about new stairs, but these just felt more in keeping with the home's character.' **GET THE LOOK** The banister is painted in Farrow & Ball's Railings estate eggshell. The floor light is by Jieldé, available from Made in Design. The dark wood cabinet is from an antiques market. For similar, try Mid Century Modern. The drinks tray is from Pitfield London. The vintage Parker Knoll sofa was bought on eBay and reupholstered. For similar, try Lawson Wood. The framed insects on the wall (opposite page) were handed down from Holly's family; the geometric print beneath was bought at Etsy.

## KITCHEN DETAILS

A deep ceramic butler sink evokes the feeling of being back in the country for Holly. The kitchen cabinets were made to order by a joiner. Holly has kept things rustic in the kitchen with simple accessories – glass bottles refashioned as vases, enamel plates and quirky touches such as deer-head hooks and a retro feather duster.

**GET THE LOOK** Kohler does a similar sink. The kitchen cabinets were made by Woodside Ridell joiners. For similar vases, try Future & Found. Oka sells deer-head hooks. Find a wide range of enamel kitchenware at Labour and Wait. Try Dyke & Dean for feather dusters.



## KITCHEN

Holly doubled her kitchen's size by extending into the side return and added glazing at the back and a long skylight on top, providing a sunny contrast to the front room. 'I wanted that sense of the kitchen running into the garden,' she says. She also created a contemporary rustic vibe with a bespoke dining table, repurposed chicken-house heaters as lights and a stainless-steel range cooker.

**GET THE LOOK** The lights came from Circus Antiques. The table was made by Pigeon Vintage Furniture. The Bertioia wire chairs are from Little Paris. The wood-backed dining chairs were found at The Peanut Vendor. The cooker and hood are by Smeg. The geometric wall tiles are by Emery & Cie, available at Retrouvius.



## Home truths

**IN YOUR RICH FANTASY LIFE, YOU WOULD LIVE IN...** A château in France.

**WEARING...** More jewellery.

**AND DRIVING...** An old convertible Mercedes.

**WHAT DO YOU WISH YOU'D DONE EARLIER?** Learnt to cook well.

**WHAT DO YOU WISH YOU'D DONE LATER?** Got a mortgage.

**WHO INSPIRES YOU?** Dolly Parton.

**WHAT DO YOU NEVER LEAVE HOME WITHOUT?** A tape measure

is very important in my life.

**IF YOU WERE A TV EVANGELIST, WHAT WOULD YOUR SHOW BE ABOUT?** Being kind to animals.

## STUDY

Holly uses one of the three bedrooms as her study. 'I spend a lot of time at home working on projects,' she says. 'Work and home definitely feed each other, which I love.'

**GET THE LOOK** The desk is from Twentytwentyone. The desk light was bought at an antiques market. For similar, try Anglepoise. The chandelier is from Ardingly Antiques & Collectors Fair. Try [thefrenchhouse.co.uk](http://thefrenchhouse.co.uk) for similar. The paint colour is Farrow & Ball's Dix Blue estate emulsion.

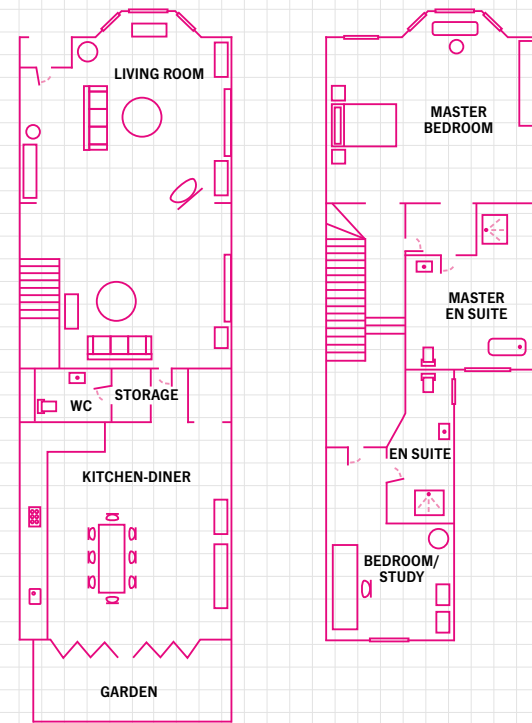


## MASTER BEDROOM ↑

'I love old perfume bottles. I think they look really sweet on a dressing table,' says Holly, who also keeps her jewellery – much of it handed down from her mother and grandmother – in pots on the table.

**GET THE LOOK** The dressing table is from an antiques shop in Petworth, West Sussex. For similar, try Max Rollitt. For old perfume bottles and pots, try Mollie & Fred.

## The blueprint



GROUND FLOOR

FIRST FLOOR

## MASTER BEDROOM

Holly indulged in some luxe touches for the bedroom, with chic bedding and a bespoke mustard-coloured headboard to lighten up the space. A Victorian-style radiator has also been fitted, in keeping with the building's heritage.

**GET THE LOOK** The wings on the wall are from Rockett St George. The bedside cabinets and made-to-order headboard are from Holly's House. The headboard is covered in linen fabric by Busby and Busby. The bedding is from Caravane. The patterned pillow is covered in fabric by Elli Popp, available from Holly's House. The AJ Ekliptra bedside light is by Louis Poulsen from Twentytwentyone. The radiator is from Stonewoods. The walls are painted in Paint Library's Boudoir emulsion.



# HOMESetc

## EN-SUITE BATHROOM

'The bath was one of the first things that I bought for the house,' says Holly. 'I then made everything work around it, with a black wall so it really stands out. I love the way its slightly battered surface catches the light.'

**GET THE LOOK** The bath, tap and shower attachment are by William Holland. The wall is painted in Farrow & Ball's Off-Black estate emulsion. The flooring is by Element 7. For a similar WC, try Laufen. Try Graham & Green for a sun-shaped mirror. Find similar blinds at Direct Blinds.



Download your digital edition today: visit [housetohome.co.uk/digital-editions/livingetc](http://housetohome.co.uk/digital-editions/livingetc)